

Lake Beulah

PROTECTIVE &
IMPROVEMENT
ASSOCIATION

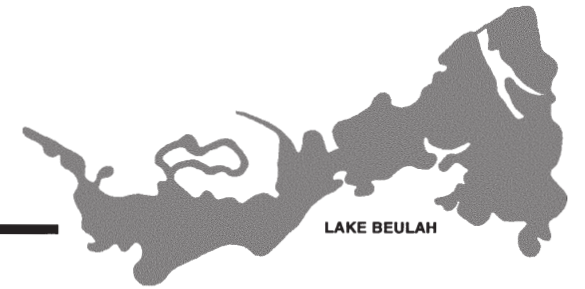


Established 1894
Member, Wisconsin Association of Lakes

P.O. Box 153
East Troy, WI 53120

Presorted
First Class Mail
US Postage
PAID
OSS Mail &
Marketing

Lake Views



VOL 17 NO 1

A PUBLICATION OF THE LAKE BEULAH PROTECTIVE & IMPROVEMENT ASSOCIATION

Spring 2009

From the President's Desk

Welcome to the Spring 2009 edition of the Lake Views newsletter! I was looking back through my e-mails from the last twelve months and noticed that about five hundred of them pertain to our lake. There are so many issues that we have to deal with as stewards of the lake and its surrounding environment that it is hard to know where to begin. It certainly makes me pine for the days when all we had to worry about was invasive species!

The biggest agenda item that we have been dealing with over the past eight years is the Village of East Troy's Well Number 7. As you are probably aware, the Village has been using this well for several months. We are still in the appeal process of contesting the permits that were issued for the well. Your generous financial support has been critical in allowing us to continue to challenge the legal status of this well. It is our intention to see this process through to its conclusion.

We have also partnered with the Lake Beulah Management District to implement independent testing of the water quality of the lake. This data is in addition to the measurements that our volunteers have been collecting for the past several decades. When taken together, this information will help us better understand the environmental impacts of Well 7. Appropriate actions will be taken should we see any deviation from the established norms for the lake.

You may also have heard about the Village of East Troy's Smart Growth plan. Smart growth is a state

mandated planning process that all municipalities must undertake. It sets out the community's goals and plans for the next twenty plus years. The Lake Beulah Protective and Improvement Association has reviewed this document in detail. We have also sponsored meetings with other concerned organizations with the aim of reviewing and commenting on the Village's Smart Growth Plan. The result of these meetings was an eighteen-page document that we have submitted to the Village. This document outlines our concerns and relays our comments on the Smart Growth Plan as it stands right now. We will be giving more details of this very important development to you at the Spring Annual Meeting.

This year we are continuing our partnership with Camp Edwards to promote the education of the area's youth through their "Water Days" activities. The Association has also been active in monitoring other threats to Lake Beulah, especially the increased observations of Gypsy Moths in the forests surrounding the lake.

Please make plans to attend our Annual Spring Meeting to learn more about these and other items of interest to those who love our lake. The meeting will be held at 9AM on Saturday May 2nd at the East Troy Town Hall. See you there!

Scott Miller, M.D.
LBPIA President

LBPIA Spring Members' Meeting

Saturday, May 2, 2009 beginning @ 9:00 AM

Town of East Troy Town Hall

N 9220 Stewart School Road, East Troy, WI

The usual coffee, donuts, and good fellowship will be available.

In This Issue...

Gypsy Moths	2
Boating Season Is Here!	3
Critter Corner.....	4
Water Clarity	6

The Gypsy Moth

By Ray Fisher



Here is the life cycle of this pest: Caterpillars emerge from late April to late May and begin feeding, and then stop feeding. They pupate from late June to mid-July. Adult moths emerge from pupae, mate and die in mid-July to early August. Eggs winter in an egg mass, protected in a blanket of the female moth's hair.

Imagine what our lake would look like without trees! Here's what every LBPIA member should do to control this pest: Educate yourself and your neighbor. Visit the DNR website www.gypsymoth.wi.gov. Attend the LBPIA spring meeting when Randy Cooper, Walworth County Forester, will give a presentation on Gypsy moths. I will have handouts available.

Take fall egg mass surveys to monitor outbreak populations. If you find 12-13 egg masses in an eighteen and one-half foot circle, notify Chrissy Regester, Walworth County UW-Extension Gypsy moth coordinator, at 262-741-4958. She will take a formal survey and coordinate aerial spraying for the next spring. Use the methods described in the literature to control minor populations. Unfortunately, these moths will be with us forever. The best we can do is to prevent population outbreaks.

Points of Interest

1. We are looking for three area chairs. See the list in this issue of Lake Views and contact Andrea Jarecki.

2. See the Association's executive summary and detailed comments relating to the Village of East Troy's proposed Smart Growth Plan on the LBPIA website under "Current Issues".

3. For information regarding opportunities to help the restoration effort for the Beulah Bog State Nature Area, go to www.dnr.wi.gov/org/land/er/sna/sna122.htm.

4. The Kettle Moraine Land Trust is a co-sponsor of a conservation subdivision design workshop in the Lake Geneva area on May 7. For more information, contact lori@kmlandtrust.org.

5. Membership applications for our Association can be obtained from Andrea Jarecki at andrea.jarecki@yahoo.com.

Gypsy moths are now a problem for Lake Beulah. Moth outbreaks cause defoliation, which will weaken the trees. If defoliation occurs during drought conditions, trees will most likely die. Weakened trees are more susceptible to being killed by insects such as the two lined chestnut ash borers. Most of the trees on the preferred Gypsy moth food list can be found around the lake. Oaks and tamaracks are special favorites.

Gypsy moth populations can build rapidly because each egg mass contains 500-600 eggs. The outbreak threshold is 12-13 egg masses in an eighteen and one-half foot circle, which amounts to 500 egg masses per acre.

Gypsy moths arrived in Wisconsin in 1999. This spring eight areas in Walworth County, totaling 451 acres, will be sprayed. The largest spray block is the 97acre Lake Beulah Block, which is around Romadka Park, Byrnes Street, and County Road J. A total of 10,300 acres, involving twenty-three counties in Wisconsin, will require aerial spraying in 2009.

Lake Views is published periodically by the Lake Beulah Protective & Improvement Association. Every effort has been made to provide correct and accurate information. There is, however, no guarantee as to the total accuracy of information included. The opinions expressed are not necessarily those of the LBPIA Board of Directors. Individuals who wish to submit articles, artwork, poetry, calendar items or photography may send contributions to Lake Views Editor, LBPIA, P.O. Box 153, East Troy, WI 53120. Articles in Lake Views may be reprinted or reproduced for further distribution, with acknowledgment to the Editor.

Area Chair Network

April 2009

Area Chairpersons are committed Lake Beulah residents who serve as the primary contacts for the Association. Should you have an interest or concern about anything regarding the Lake, please be sure to contact your area chair.

Lake Beulah Area	Chairperson(s)
A Country Club Lane & Austin Rd.....	Jane Tanis (262-642-9232) jtanis@wi.rr.com
B Beulah Heights Road.....	Richard Stenglein (262-642-3643)
C Oakwood Lane & It's A Little Road	Jim Holtermann(262-642-3050)
D Lake Road & Windy Way	Penny Clayton(262-642-3083)
E County J Road.....	Don Tacke(262-363-4327)
E Marsh Road & Millsite Road	Don Tacke (262-363-4327)
F Island Drive & Golden Way.....	Jean Maiwald (262-363-0829)
G Brynes Lane & Romadka Park Road	Roy Gerloff (262-642-5213)
H Horseshoe Lane & East Shore Road (to Beulah Park)	Josie Midman(262-363-8892)
I Beulah Park Road.....	Vacant
J East Shore Road & Thistle Lane.....	Vacant
K South Shore Drive (to Humphrey Lane).....	Vacant
L South Shore Drive & Humphrey Lane	Kathleen Taugher(262-642-3835) ptaug@milwpc.com
M Kings Parkway & Kings Lane.....	John & Bea Sonderegger(262-642-5716) johnsonderegger@att.net
N Pastime Lane & Grandview Drive	Bill & Maya Murphy (262-642-9837) murphmaya@centurytel.net
O Wilmers Grove Road, Wilmers Point Lane & Wilmers Landing.....	Brian Fons(262-642-9613)
P Stringers Bridge Road, New Deal Ave. & West Bay Road	Michol Ford(262-642-5189)
Q Beach Road & Deerpath Road.....	Kim & Steve Klaver(414-313-4191)

2009 LBPIA Board of Directors

Dr. Scott Miller, President
608-757-2531 • 262-642-3033 (Lake)
themill_wi@hotmail.com

Robert V. Lewis, Vice President
262-642-4581 • 312-845-3733
rlewis@chapman.com

Ruth Rappold, Treasurer
262-642-3496
rapp@netwurx.net

Andrea Jarecki
Chair: Membership & Area Chair Network
262-642-9232

Judy Beren
Secretary
262-782-5088 • 262-642-3636 (Lake)

Jodie Allen Heimos
Information and Education - Website
262-642-7466 ext. 206
jody@campedwards.org

Robert V. Lewis
Information and Education - Lake Views
262-642-4581 • 312-845-3733
rlewis@chapman.com

Ron Anders
Chair: Water Quality
262-642-2727
randers@asapnet.net

Daniel Bach
Chair: State and Local Government
262-965-5456
dbach@lawtoncates.com

COMMITTEES & OFFICERS of the LAKE BEULAH PROTECTIVE & IMPROVEMENT ASSOCIATION

MEMBERSHIP - Chair – Andrea Jarecki
Membership expansion – Ron Anders, Ruth Rappold,
Area Chair – Ann Alger*
Member Lists and/or Directory – Judy Beren

INFORMATION & EDUCATION – Co-Chair
Lake Views Newsletter - Robert Lewis
Web Site - Jody Allen Heimos
Educational Outreaches – Ruth Rappold, Ann Alger*

FISH & WILDLIFE – Chair – Ray Fisher
Fish Stocking – Ray Fisher
Other wildlife management issues

WATER QUALITY – Chair – Ron Anders
Monitoring & Reporting - Dr. Scott Miller, Lynn Carlson
(Lake Mgm't. District)*, Glen Kreinbrink* (historical)
Aquatic Plant Management - Judy Skotarzak*
Shoreline Management – Audrey Green* (Walworth Co.)

STATE & LOCAL GOVERNMENT LIAISON

Chair - Dan Bach
Interaction on Government & Property Development Issues - Daniel Bach, John Sonderegger*, Burt Shavitz*,
Legislative & regulatory liaison – Tom Hauke*, LBPIA Board

Public Safety & Security – vacant

LONG RANGE PLANNING - LBPIA Board of the Whole
P.O. Box 153, East Troy, WI 53120

OFFICERS OF THE LBPIA

President – Dr. Scott Miller
Vice President – Robert V. Lewis
Treasurer – Ruth Rappold
Secretary – Judy Beren

*Non-Board/Interested volunteer

For more information visit our website at www.lakebeulah.org

Lake Beulah Water Clarity

By Ron Anders

In the water quality testing done by the Association, there are several characteristics for which we sample. Five area sites in the lake are monitored. All of the data collected are then forwarded to the Wisconsin DNR for permanent records.

This monitoring is separate and distinct from that done by the Lake Beulah Lake Management District – which is a governmental body for the maintenance and for issuance of any appropriate ordinances.

At each of the five testing sites, data is usually collected twice a month in summer for clarity (Secchi Disc), temperature, and dissolved oxygen, with a reading taken at three foot intervals to the bottom. In addition, samples of lake water are sent to the state hygiene laboratory for readings on chlorophyll-a and phosphorous concentrations and incorporated in the record.



For determining clarity, a Secchi Disc is lowered to see at what depth it is still visible with an unaided eye. Clarity and color are not chemical properties of water itself. They are indicators -- and therefore a measure -- of both physical and chemical properties of the sampled water.

Since water itself does not have a color, various components dissolved or suspended in the water in combination determine its appearance.

These components may be algae and silt, with the algae population usually being the largest and varied component. A lake's clarity indicates its

overall water quality and health, with a Secchi Disc depth at the higher number of feet being the best quality.

Algae in the water are essential and natural organisms, but too many or the wrong types will affect the clarity (and odor) of a lake. Obviously, a deeper Secchi Disc reading indicates a better quantity of algae. The shallower the readings caused by greater amounts of algae, the poorer the clarity. Greater clarity means fewer algae. Conversely,

total clarity can indicate a sterile lake environment. Chlorophyll-a and phosphorous tests are indicators of the concentration of algae in the lake.

The levels of nitrogen or phosphorus concentration are directly related to the amounts dissolved in the water, and in turn, directly relate to the quantity of lawn fertilizer used in the surrounding watershed. Lake Beulah is primarily a ground water

drainage lake, fed by underwater springs and runoff. The outflow is under Highway J at Mill Pond and into the Mukwonago River system.

We are fortunate that over the years Lake Beulah has maintained appropriate levels of phosphorus in the water. The conscientious use of non-phosphorus lawn fertilizers, as required by the Town of East Troy Ordinance, will continue the quality of the lake itself. Everyone can easily contribute to the water quality with this one small step. Remember, we're all in this together!

2009 Boating Laws Update

By Town of East Troy Police, Chief Jim Surges

Instead of being educated about our boating laws through an encounter with our patrol boat, a review of our boating laws may prove less painful.

Slow-No-Wake-A speed no greater than is necessary to steer your boat. This speed must be observed during the following circumstances:

1. 150' from shore.
2. 100 feet from any pier, raft, moored boat, skin diver's flag, or a swimmer.
3. While traversing any channel on Lake Beulah.
4. Between shore and any slow-no-wake buoy located along the shoreline.

Although it is often difficult to determine distance with certainty, please err on the side of safety.

Age Restrictions

1. No one under the age of 10 may operate a motorboat.
2. No one under the age of 12 may operate a personal water-craft (generic term - jet ski or PWC).
3. Persons between 10 and 12 may operate a motorboat (except PWC) if accompanied by a parent or guardian, or a person at least 18 years of age designated by a parent or guardian.
4. Persons 12 thru 16 may operate a motorboat under the requirements of number 3 above, or if they have successfully completed a DNR Boating Safety Course and possess a certificate. To operate a PWC, persons at least 12 but under 16 years of age must be in possession of a valid, state approved boating safety certificate. (Parental supervision is not a substitute for a safety certificate.)

Speed Restrictions

1. On Saturdays, Sundays and Holidays, a boat must observe the Slow-No-Wake rule from 6 PM to 10 AM. This includes Saturday morning. If your boat's speedometer does not work at low speeds, or you have no speedometer, if you are on plane, you're going too fast.
2. A boater must travel no faster than is reasonable and prudent under the existing conditions. Sorry this is so vague. There is no real speed limit on lake Beulah. If the speed of your boat is placing you or someone else in danger, based on what the officer sees, you may be cited. Therefore, open water with no



traffic is the place to enjoy your boats' speed. Once other traffic enters the scene or you approach areas with limited sight distance, you must reduce your speed accordingly.

Water-skiing

1. Skiing is allowed only from 10:00 AM until sunset, Monday through Friday, and between 10:00 AM until 6:00 PM on Saturdays, Sundays and Holidays. (The weekday 10:00 AM start rule is frequently violated – please advise new-comers to our lake)
2. Use of a Personal Flotation Device is strongly recommended while water-skiing on Lake Beulah.
3. During weekends and holidays on Lake Beulah, you may only use one tow-rope behind your boat at a time, therefore only single skiing is allowed. If you tow a device that can carry several people, you may do so as long as only one tow-rope is used.
4. The boat and skier are a complete package. The skier as well as the boat must stay clear of areas requiring slow-no-wake. Therefore, pulling skiers from shore or dropping them off is prohibited. If you have someone who cannot deep-water start, there are several, places on the lake with shallow areas which are not in slow-no-wake zones.
5. Each boat towing a skier must have one competent observer in the boat in addition to the driver.

Personal Water Craft

- (jet skis, wave runners, et al)
1. All persons riding a PWC must wear a PFD (life vest).
 2. It is illegal to operate a PWC while facing backwards.

(continued on page 4)

(continued from page 3)

3. If a PWC is within 100' of any other craft, including other PWC's, the PWC must not exceed a speed of slow-no-wake.

5. Remember that PWC's are motorboats. All additional boating laws apply to them as well, such as registration, etc.

6. If you use your PWC to tow a skier, you must use a PWC designed for at least three people. You must have a competent observer aboard as well. One place on the PWC must remain vacant in case your skier needs transport.

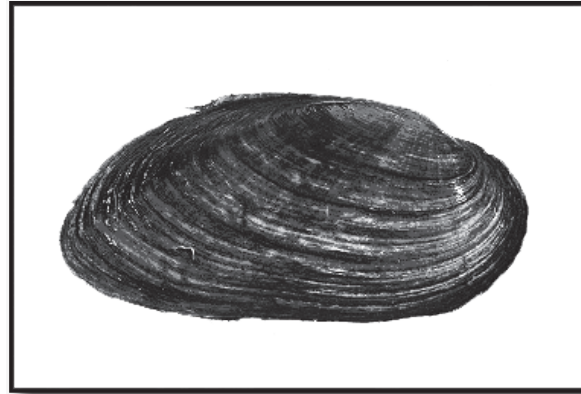
Miscellaneous

1. You must have one PFD for each person on board.

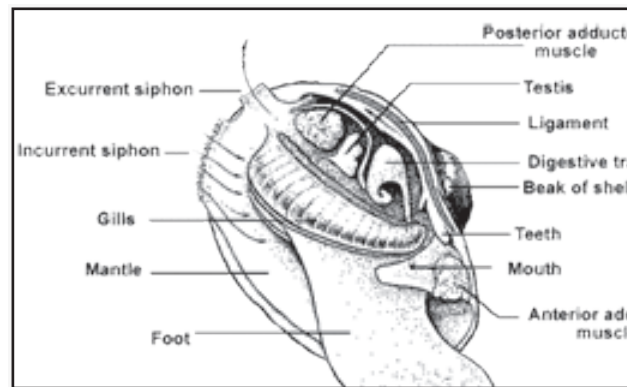
2. You must have your front and rear light operating if you are out after sunset. Check these lights before you leave your residence if you know you are going to stay out late.

3. Operating a boat while under the influence of alcohol or other drugs is illegal. Any accident on the water is considered serious due to the environment where it occurs. Therefore, please be sensible about alcohol consumption while you are around the water.

4. Sailboats 12 feet and larger must be registered and display their registration numbers.



One major difference between clams and mussels is that most mussels require a host fish for reproduction. The male mussel releases sperm into the water that the female mussel takes in via her incurrent siphon. The embryos grow within the mother and are released as larvae when a host species of fish comes near. The fish injects these larvae which then "sting" the fish's stomach, causing the fish to try to back wash them out. The larvae then attach to the fish's gills where they grow until they are old enough to make it on their own. These larvae don't seem to harm the host fish and once they have grown sufficiently, they release from the fish and settle to the bottom to restart the life cycle. Zebra mussels are an exception to the rule because they don't need a host fish for reproduction.



Bob Burmeister has been scuba diving on the lake for years and he tells me that the population of freshwater clams and mussels declined greatly with the emergence of the Zebra Mussels. Many of the clams that I have come across in the lake are encrusted with Zebra mussels. Hopefully these bivalves will make a come back as the populations of invasive species fall off.

Purple Martins

It's Purple Martin Time!
By Ray Fisher

Purple Martins are the largest member of the swallow family. These birds arrive around April 15 and depart mid-July. They are the only bird species in the world that are almost totally dependant on man for nesting sites so let's erect more Martin houses. There are two colonies on the upper lake and one on the lower lake that I am aware of. Once a colony is established, the birds will return every year. Purple Martins earn their keep by eating mosquitoes.

From East Troy, Martins will migrate to Sao Paulo, Brazil. Recently, ornithologists placed tiny geolocators on Purple Martins and Wood Thrushes. The data revealed these birds traveled over 300 miles a day during the spring migration. That is truly remarkable for birds that weigh just under two ounces. Visit www.naturehouseinc.com for housing options and www.naturesociety.org for Purple Martin information.



Additional Contacts For Lake Residents

Town Chief of Police:

Jim Surges
Ph# (262)642-3700,
N9220 Stewart School Road,
East Troy, WI 53120

Town Hall:

(262)642-5386,
N9220 Stewart School Road,
East Troy, WI 53120
(Sandy – receptionist)

Lake Management

District Attorney:

Dean P. Laing
O'Neil, Cannon, Hollman, DeJong S.C.
111 E. Wisconsin Avenue, Suite 1400
Milwaukee, WI 53202
Telephone: 414-276-5000
Facsimile: 414-275-6581
Email: dean.laing@wilaw.com

Chairman, Lake Beulah Management District:

Dave Skotarzak,
Ph# (262)363-7603,
Fax# (262)363-9303
N9554 Millsite Road,
Mukwonago, WI 53149
E-mail: mmsko@elknet.net

Chairman, Town Board:

Robert Mueller,
N9124 Humphrey La.,
East Troy, WI 53120
(262) 642-7172

County Supervisor,

(Dist. 1 – Town of East Troy), Walworth County:
Rick Stacey (262) 642-9689

LBPIA Attorney:

Dennis L. Fisher,
William Stuart
Meissner Tierney Fisher
& Nichols S.C.,
The Milwaukee Center,
111 East Kilbourn Ave.,
Milwaukee, WI 53202-6622
Phone (414)-273-1300;
Fax (414)-273-5840;
e-mail DLF@MTFN.Com

LBPIA Web Site:

www.lakebeulah.org.

Effective as of March 1, 2009

Critter Corner

By Scott Miller

Freshwater Mussels and Clams

Lake Beulah is home to several native species of freshwater mussels and clams. These clams and mussels are "bivalves" which means that they have two shells. They are filter feeders and take in nutrients by sucking water through their incurrent siphons, filtering out food stuffs and then releasing the water back to the lake via their excurrent siphons.